



Harford Street, London, E1

BUTLER & STAG



Guide Price £300,000 - £325,000
Recently Extended Lease -
Occupying the fourth floor of this
purpose-built development and
enjoying stunning views towards
the London skyline, this well-
proportioned one-bedroom
apartment offers bright and
spacious accommodation
throughout.

Leasehold

- Recently Extended Lease 175 Years
- Views Of The London Skyline
- One Bedroom
- Resident Parking Permit Available
- Fourth Floor Apartment
- West Facing Balcony
- Lift Access To All Levels
- Stepney Green Tube Station A Moment's Walk Away

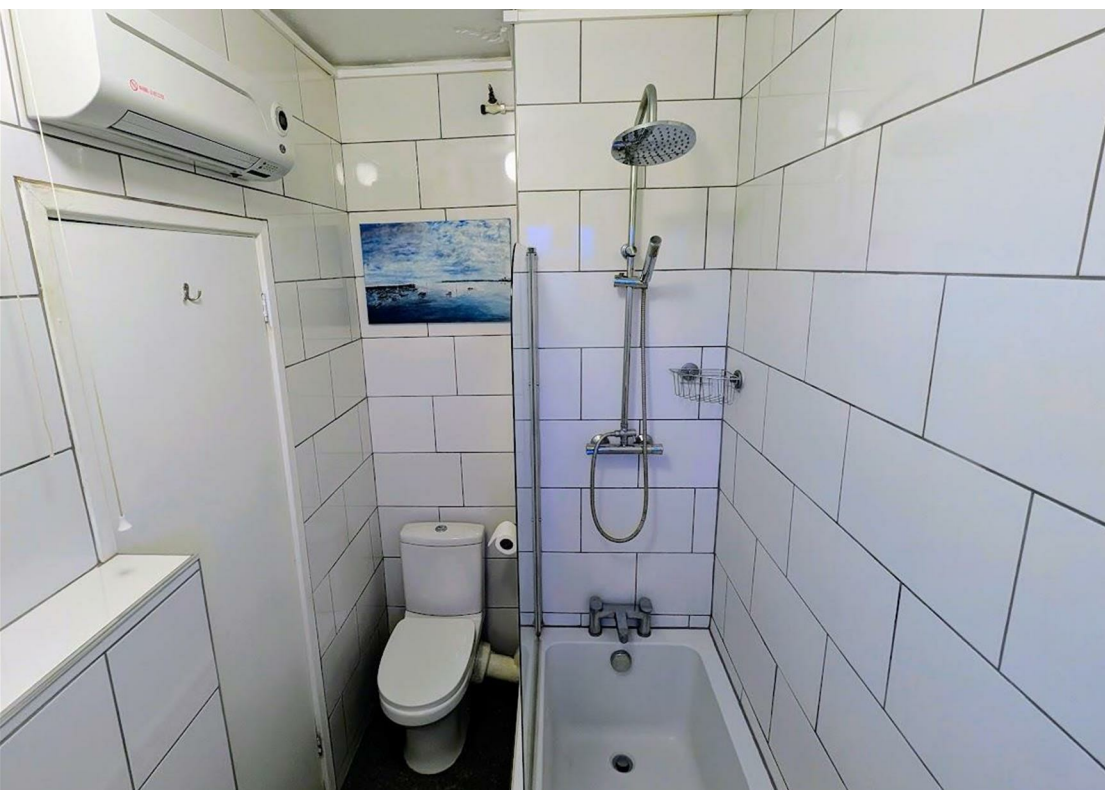
The property features a generous reception room, separate fitted kitchen, a well-sized double bedroom and a contemporary bathroom.

Further benefits include ample storage, large windows allowing an abundance of natural light, secure entry system and lift access, ensuring convenience and peace of mind for all residents.

Located just minutes from Stepney Green Underground Station, the apartment offers excellent transport links to the City, Canary Wharf, and beyond. Local amenities, including shops, cafés, and restaurants, are within walking distance, and the vibrant areas of Whitechapel and Shoreditch are easily accessible.

With its combination of a practical layout and prime location, this apartment on Harford Street is the perfect urban retreat for those seeking convenience in one of East London's most vibrant neighborhoods.

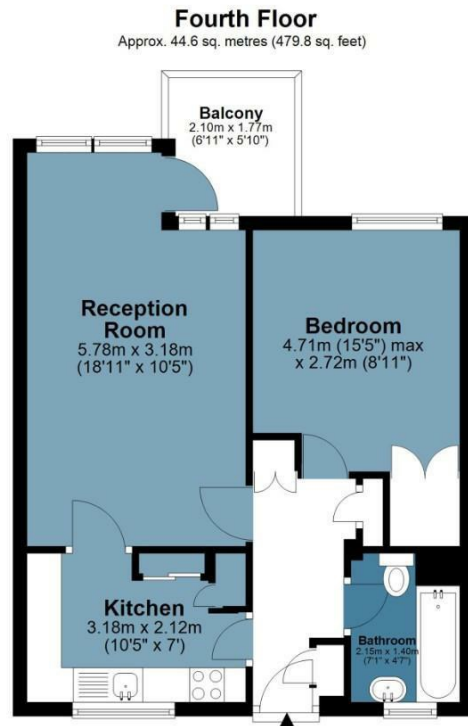




Galveston House

Approx. Gross Internal Area 44.6 Sq M (479.8 Sq Ft)

BUTLER & STAG



Measurements are approximate and for illustration purposes only. While we do doubt the accuracy and completeness, we advise you consult a careers independent assessment of the property to determine monetary value.
© @modephotouk www.modephoto.co.uk

BUTLER & STAG

☎ 020 8102 1236

🏠 508 Roman Road, Bow, London, E3 5LU

✉ bow@butlerandstag.com

www.butlerandstag.uk

IMPORTANT NOTICE - These particulars have been prepared in good faith and they are not intended to constitute part of an offer or contract. We have not performed a structural survey on this property and the services, appliances and specific fittings have not been tested. All photographs, measurements, floor plans and distances referred to are given as a guide and should not be relied upon.